

## FEMALE GENITALIA OF A SPECIES OF SPIDER LIVING IN TURKEY (ARANEAE: DRASSIDAE)

SEVİNÇ KAROL

*University of Ankara, Faculty of Sciences, Biology Department, Ankara*

### ABSTRACT

The female genitalia is given of *Gnaphosa lucifuga* that so far was not shown in detail.

### INTRODUCTION

The genus of *Gnaphosa* is rather a large one, including more than fifty species which are distributed all over the world. Among the well known species of them, *G. lucifuga* is mainly a European species which is found, also, in Turkey (Pavesi, 1876; Nosek, 1905; Giltay, 1932; Bristow, 1935; Karol, 1966) and in spite of the lackness of knowledge of the countries of near east, it is, also, found in India (Dyal, 1935).

*Gnaphosa lucifuga* was first described by Walckenaer (1802) and, later, a key for the family of Drassidae was prepared by Simon (1914). In these old publications, well drawn figures of female genitalia were missing. With the thought of filling this need, this study has been done.

### MATERIALS AND METHODS

The material was collected during the summer months around Ankara at 1954-55, It was kept in % 70 alcohol. The genitalia was prepared for microscopical study with regular methods.

### OBSERVATIONS

The epigyne of *G. lucifuga* is as in Figure 1. At the middle, there is an oval fossette (Fig. 1, f) which is covered by an anterior process (Fig. 1, ap) that extends almost the half of the epigyne. On the sides, the fossette is bordered by thick walls which converge toward the posterior, forming a V shape. Posterior to the process, at each side, there are heavily chitinized projections (Fig. 1, p).

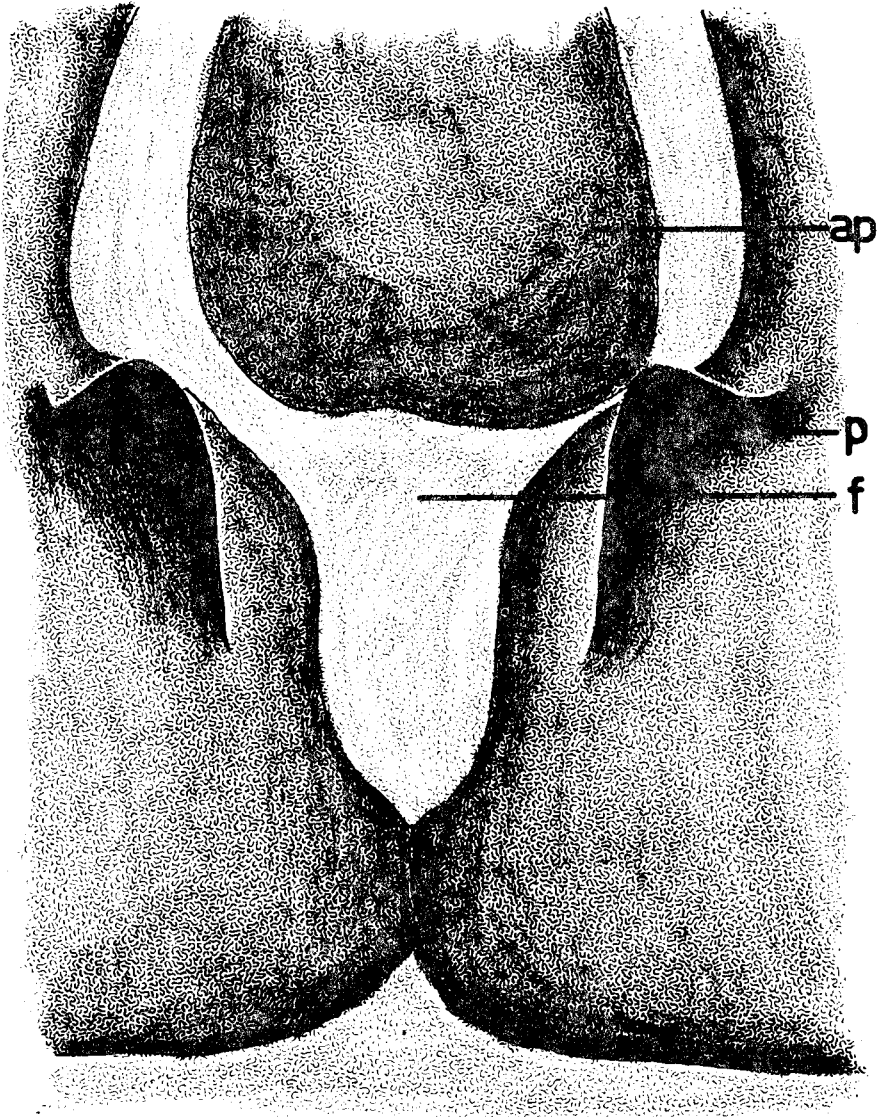


Fig 1: Epigyne of *G. lucifuga* from ventral. f. fosette; a p. anterior process; p. heavily chitinized projection.

Vulva is as in Figure 2. There are two *receptaculum seminis* (Fig. 2, r) which are found at the second half of the epigyne, posterior to the an-

terior process (Fig. 2, a). The opening of entrance (Fig. 2, o) of the canals (Fig. 2, c) leading to the *receptaculum seminis* are situated sidewardly, just under the chitinized projections of the epigyne. After leaving the *receptacula*, canals of fecondation (Fig. 2, f) run at sides, toward the anterior of the vulva.

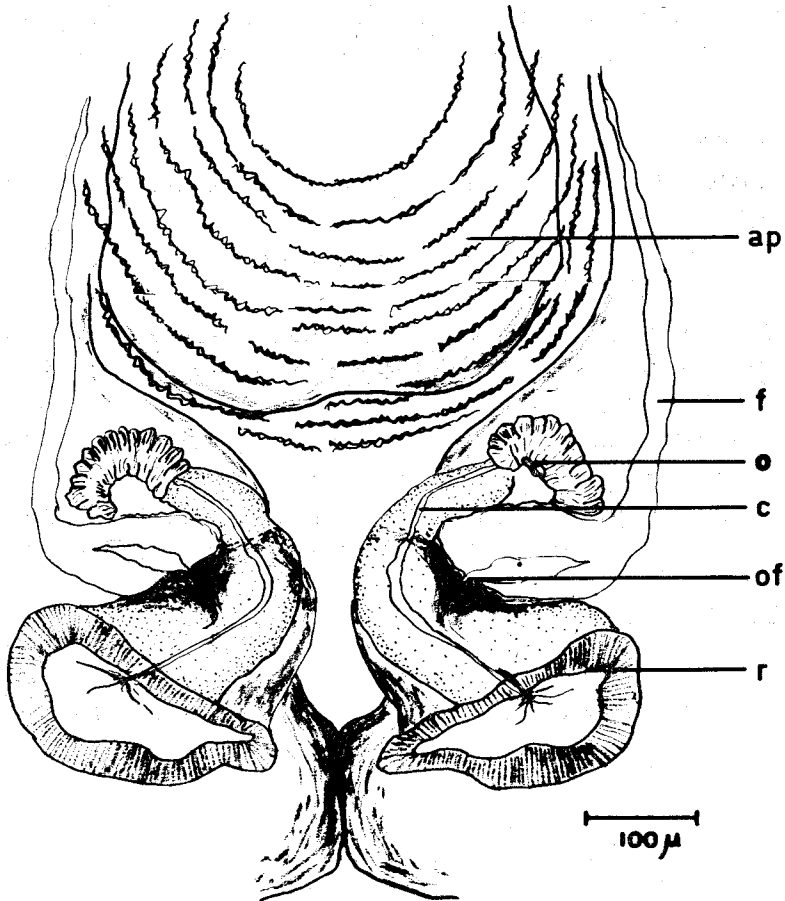


Fig 2: Vulva of *G. lucifuga* from inside. r. *receptaculum seminis*; o. opening of entrance; c. canal leading to *receptaculum seminis*; of. beginning of canal of fecondation; f. canal of fecondation; ap. anterior process seen from inside.

## DISCUSSION

Determination and the drawings of the female genitalia were made from the material collected around Ankara. With these drawings, the female genitalia was shown first time in detail.

## ACKNOWLEDGMENT

This study has been done at the Laboratoire des Arthropodes, Museum National d'Histoire Naturelle de Paris, with the kind permission of Prof. M. Vachon to whom I always own many thanks.

## BIBLIOGRAPHY

- BRISTOWE, W.S. (1935): The spiders of Greece and the adjacent Islands. Proc. Zool. Soc. Lond. 1934 (4), pp. 733-788.
- DYAL, S. (1935): Fauna of Lahore. 4: Spiders of Lahore. Bull. Dep. Zool. Panjab. Univ., 1. pp. 119-252, pl. XI-XVII, 1 cart.
- GILTAY, L. (1932): Arachnides recueillis par M. D'Orchymont au cours de ses voyages aux Balkans et en Asie Mineure en 1929, 30 et 31. Bull. Mus. Roy. Hist. Nat. Belg., 8 (22), pp. 1-40, 22 fig.
- KAROL, S. (1966): Spiders of Ankara and environ with a description of a new species, *Xysticus turcicus* (Araneae, Thomisidae). Rew. Fac. Sci. Univ. Ankara, 11, C. 3, pp 15-32.
- NOSEK, A. (1905): Araneiden, Opilionen und Chernetiden in A. Penthere und Zederbauer Ergebnisse einer naturwissenschaftlichen Reise zum Erdschias-dagh (Kleinasien). Ann. Naturh. Hofmus., 20, pp. 114-151, pl. IV-V.
- PAVESI, P. (1876): Gli Arachnidi Turchi, Atti Soc. Ital. Sci. Nat., 19 (1), pp. 50-74.
- SIMON, E. (1914): Les Arachnides de France. Tome VI, pp. 199.
- WALCKENAER, C.A. (1802): Faune parisienne. Insectes. ou Histoire abrégée des Insectes des environs de Paris. Paris, 1802, pp. 187-250.